

CORPORATE PROFILE



IMAGE TECH CO.,LTD.

MAIN PRODUCT GUIDE

X-RAY INSPECTION DEVICES

(Inline X-ray inspection devices & X-ray foreign object inspection devices)

- X-ray inspection devices for shoes, apparel, bags, small miscellaneous items
- Cast & forged product internal defect inspection devices
- X-ray inspection devices for metallic arrays in pliant structures such as plastic and rubber (tire testers)
- Custom-order inline X-ray inspection devices for onsite factory usage
- Food product contaminant X-ray inspection devices
- Others, all types of X-ray noninvasive inspection devices

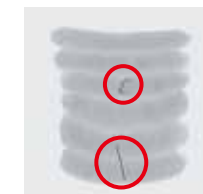
X-Ray Line Sensor System

Our system is an X-ray imaging system utilizing an "X-Ray Line Sensor Camera" to capture images. It features high-sensitivity and a wide dynamic range via use of high-resolution line sensors. This system contains a host of great functions including compatibility with a wide range of conveyor speeds and high information processing capability. Incorporating this system into your production line will allow high-speed, high-resolution "100% inspections" that were impossible up till now. This system is currently in use at various manufacturing sites making safety inspections and quality checks and is surprisingly effective.

Inline shoe sensor/apparel sensor ITX Series

Models designed for inspecting shoes and apparel via an "X-ray line sensor system"

Superb imaging performance shows all types of foreign objects besides nails in shoe soles. The ITX series shows images of tall items such as long boots of more than 650 millimeters and apparel including long coats on a single monitor screen. This series also includes a host of other excellent functions ideal for inspecting shoes and apparel.



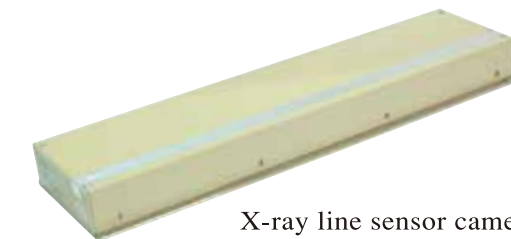
Metal objects found in sausage



Inspecting for nail defects in shoes



Broken sewing needle overlapping on clothes button in product



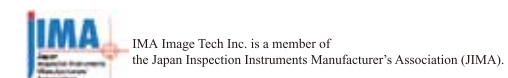
X-ray line sensor camera

Image Tech has developed a line sensor with an improved image and twice the number of sensors as previous models. Based on this design we are creating other more advanced and high-accuracy X-ray inspection devices. This sensor camera was selected by the Organization for Small and Medium Enterprises' SME Venture Challenge Assist Project (Startup projects aid)" as a 2007 practical R&D project and has greatly spurred our development work and led to creation of new products.



IMAGE TECH CO.,LTD.

4-9-22 Sanarudai Naka-ku, Hamamatsu,
Shizuoka Prefecture, 432-8021, JAPAN
PHONE: 81-53-401-5306 FAX: 81-53-401-5317
E-mail: sales@imagetech-kk.com
URL: <http://www.imagetech-kk.com>



IMA Image Tech Inc. is a member of
the Japan Inspection Instruments Manufacturer's Association (JIMA).

Contact us at:

WELCOME TO A NEW WORLD OF X-RAY SENSORS IN A FIELD OF SUPER-ENHANCED SPEED & ACCURACY!

Our company called Image Tech Incorporated was founded in Shizuoka Prefecture in the city of Hamamatsu which is the center of a booming optical electronics industry. Recently, dedicated industry manufacturers are focusing much attention on the "Inline X-ray Inspection Devices" we have developed here at Image Tech.

Up until now industrial X-ray inspection devices check products by conventional hit-or-miss sampling inspections. However, the inline X-ray inspection devices from Image Tech allow making "real-time inline 100% inspections." These Image Tech units are now grabbing manufacturer's attention because of the drastic benefits they bring to onsite inspection and quality control.

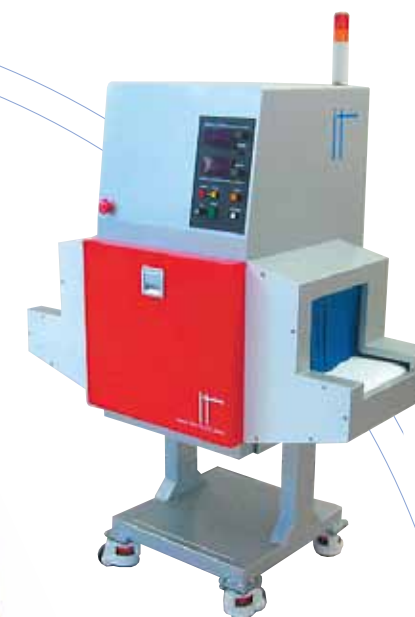
Products from Image Tech for example have a special "wide field-of-view inspection" feature that is impossible for ordinary 2-dimensional sensors such as FPD and X-ray image intensifiers. Here at Image Tech, we develop, manufacture and sell these special X-ray line sensor systems in one integrated process that has amassed solid results with an extensive range of satisfied customers.

Image Tech also customizes "inline X-ray inspection devices" that must be used in restricted work spaces and special work environments to meet different customer needs. This customizing gives a precise response to customer needs and has won us customer trust.



COMPANY OVERVIEW

- **Company Name** IMAGE TECH CO.,LTD
- **Founded** October 6, 2000
- **Representative** Keiji Suga President
- **Location** 4-9-22 Sanarudai Naka-ku, Hamamatsu, Shizuoka Prefecture, 432-8021, JAPAN
PHONE: 81-53-401-5306 FAX: 81-53-401-5317
URL: <http://www.imagetech-kk.com>
E-mail: sales@imagetech-kk.com
- **Capital** 10,000,000 yen
- **Main Banks** Hamamatsu Shinkin Bank, Shizuoka Bank
- **Business Operations** Prototype development, manufacture, sales and maintenance of X-ray nondestructive inspection equipment;
Prototype development, manufacture and sales of industrial TV camera systems
R&D work on various measurement devices, and consultation services
- **Organizations** Japan Inspection Instruments Manufacturer's Association (JIMA)



Inline X-ray inspection device ITX-25 (demo device)

- **MAIN VENDORS** Toshiba Medical Supply Co., Ltd
Hamamatsu Photonics K.K.
Pulstec Industrial Co., Ltd.
Kinki Roentgen Industrial Co., Ltd.
Taniguchi Electronics Co., Ltd.

- **MAIN CUSTOMERS** Institute of Space and Aeronautical Science (ISAS)
Kinki Roentgen Industrial Co., Ltd.
HASHIMA CO, Ltd.
MAEKAWA MFG.CO.,Ltd
NIPPON ZETTOK CO.,Ltd
YOKOHAMA RUBBER CO.,Ltd
SUMITIMO RUBBER INDUSTRIES.Ltd
TDK Corporation
Tsubakimoto Kogyo Co., Ltd.
Hamamatsu Photonics K.K.
Chikuma Seiki Co.,Ltd
Shimadzu Mectem, Inc.
Itochu Techno-Science Corporation
Sony EMCS Corporation

(in no particular order)

CORPORATE HISTORY

- **2000** Company founded
- **2002** Developed a portable X-ray inspection device
- **2005** Developed X-ray line sensor camera
- **2006** Moved corporate offices (to Hamamatsu Innovation Cube)
- **2007** Developed inline X-ray inspection device
- **2009** Developed panoramic X-ray detector for car and truck tires.
- **2011** Moved corporate offices (to current location)

(Current as of October 2011)

My Profile

I have two daughters. What should parents do for their kids? My way of thinking is that one should give them something that won't wear away no matter how much you use it. But material objects and money fade away the more you use them. However once you acquire an ability or talent it never seems to fade away no matter how much you use it. Moreover that ability grows and increases in value. However first acquiring or mastering that capability takes money in the form of educational costs... I believe that making use of talent can turn it into something useful for our society.

This company is my third child. Just as when raising a child, instilling performance within a company requires both time and money. However, if this results in something that makes society a better place, then that would be the happiest event in my life. To make that happen, my constant goal is to carefully foster a company that truly benefits its customers, brings them profits, and that they truly appreciate.

Though this is a personal thing, I have always liked music since I was a child and can play wind instruments a little. This ability does not fade away as you use it and cannot be purchased with money. Things you cannot buy with money, I want to turn those kinds of things into an asset for my company, and make that kind of value appear in products headed for the customer.

Image Tec Incorporated Keiji Suga President and Director



Image captured by line sensor

